

Drain Plugs Polyamide

Drain Plugs

- Drains condensed water in the housing.
- Helps to avoid any potential damage to sensitive electric/electronic equipment in the housing due to condensed water.
- Also allows air in the housing to breathe with the surrounding atmosphere.

Technical Details

| | | |
|----------------------------------|---|-------------------|
| Material | Body | PA 66 |
| Ingress Protection Rating | IP 56 / IP 66 (Category 2) | |
| Flammability | V2 according to UL94 | |
| Operating Temperature | Permanent | -20 °C to +100 °C |
| | Intermittent | -30 °C to +150 °C |
| Thread Type | • Metric EN 60423 | |
| Accessories | • Lock nuts • Gaskets (Washers) | |
| Remarks | • We recommend the use of lock nuts and gaskets to ensure IP rating for rough surfaces or through holes. • All accessories must be ordered separately. | |

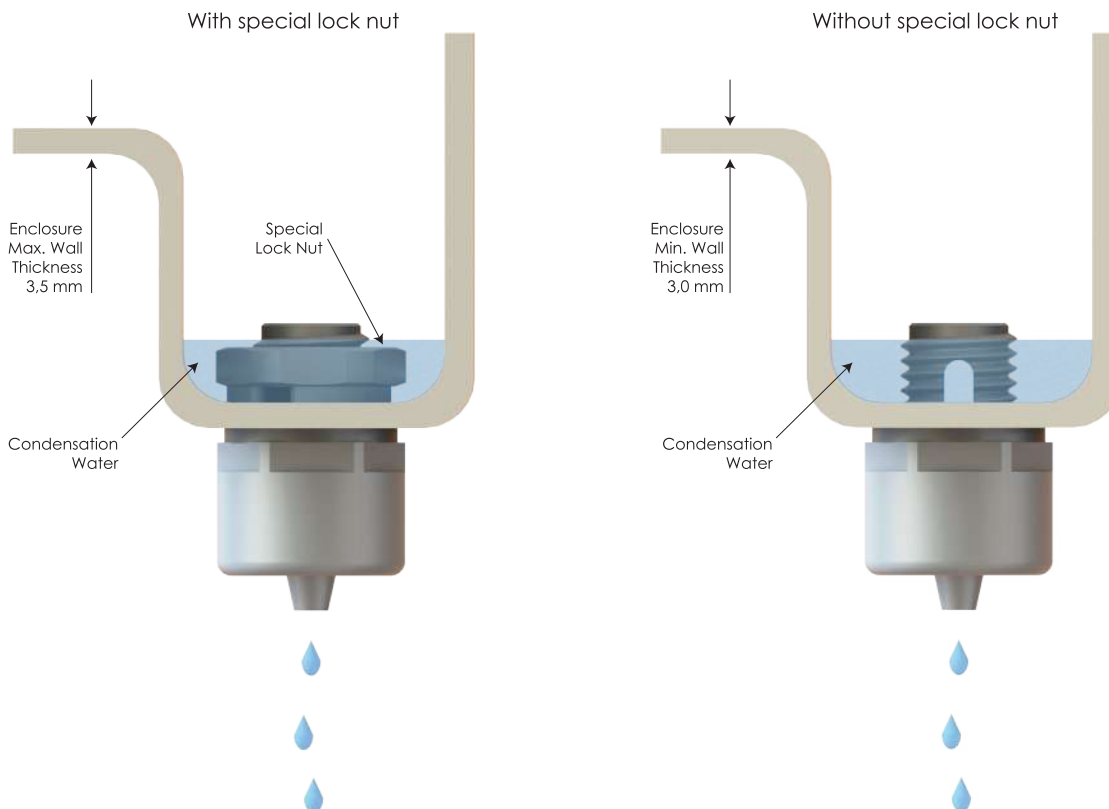


Order Coding

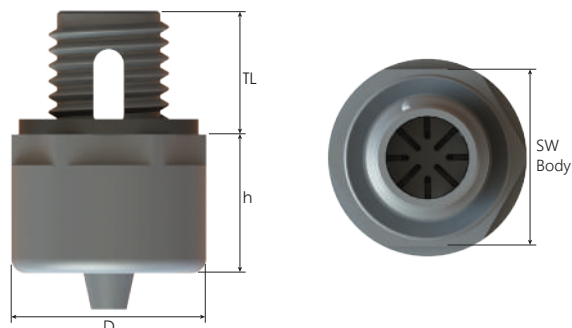
| | | |
|--------------------|---|-----------------|
| Part Number | - | Lock Nut |
| Mandatory | - | Option |
| See table | - | L Lock nut |
| Example | | |
| BDRP-11 | - | L |



Ideally it should be located at the lowest point of the housing to ensure optimum draining.

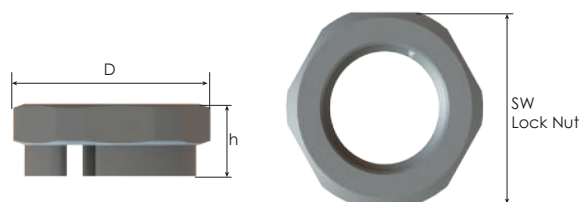
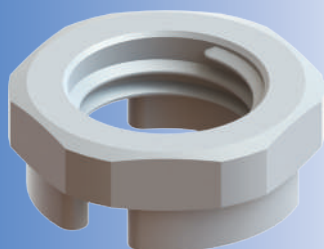


Drain Plugs Polyamide



Thread Type **METRIC acc. to EN 60423**

| Outer Thread Size (Male) | Outer Thread Length TL mm | Outer Ø D mm | Height h mm | Part Number | | |
|--------------------------|---------------------------------|--------------------|-------------------|---------------------|---------------|----------------|
| | | | | RAL 7035 light grey | RAL 7001 grey | RAL 9005 black |
| M12x1,5 | 12,0 | 19,0 | 17,0 | BPDRP-11 | BPDRP-01 | BPDRP-21 |



Special Lock Nuts for Drain Plugs

| Inner Thread Size (Female) | Spanner Width SW Lock Nut mm | Outer Ø D mm | Height h mm | Part Number | | |
|----------------------------|------------------------------------|--------------------|-------------------|---------------------|---------------|----------------|
| | | | | RAL 7035 light grey | RAL 7001 grey | RAL 9005 black |
| M12x1,5 | 18 | 19,2 | 7,0 | BML-1S (DRP) | BML-0S (DRP) | BML-2S (DRP) |